

OTARI-WILTON'S BUSH TRUST

News and Views September, 2015

Web site: www.otariwiltonsbush.org.nz. For all walks meet at the Information Centre, Te Marae o Tane unless otherwise stated. Walks with talks first will start at the Leonard Cockayne Centre. Unless otherwise stated walks are free to Trust members, otherwise \$5. For information re walks and seminars contact the Treehouse on (04) 499 1400

<p>The first Saturday of each month. 9am</p>	<p>Plant care is on the first Saturday of each month. Contact Wilbur Dovey, 499 1044.</p>
<p>Thursday 17 September 8.30am</p>	<p>Keep NZ Beautiful Cleanup We are again joining in the annual Cleanup of NZ. We are going to clean up the boundaries and tracks. (In the summer when the water might be warmer and the water level lower we will clean up the stream.) This project will leave Otari looking pristine for Open Day. Meet on the deck at the Information Centre at 8.30am for a brief health and safety talk. Bags and gloves will be provided. We look forward to seeing a number of enthusiastic volunteers</p>
<p>Sunday 20 September 2pm</p>	<p>Sunshine: the limited resource Go in depth on this guided tour along the Nature Trail. You will examine the varied mechanisms plants use to get their foliage into the sun. This relaxed two-hour walk involves a short section of steep steps. Meet at the Information Centre. <i>Leader: Chris Moore</i></p>
<p>Saturday 26 September</p>	<p>Open Day and plant sale. (See page 4 for details)</p>
<p>Sunday 25 October 2pm</p>	<p>Workshop on small-leaved plants and divaricates, part 2 In this two-hour workshop there will be a brief talk followed by a walk to study the small-leaved shrubs growing in Otari, focussing on species found in the Wellington Region. Meet at the Leonard Cockayne Centre <i>Leader: Leon Perrie</i></p>
<p>Sunday 22 November 2pm</p>	<p>The tricks of the trade: adapting to survive Plants grow on windswept coastlines, through lush forests, in waterlogged bogs, and on snowy mountains across New Zealand. Find out how they have adapted to survive on this Curator led one-hour easy walk through the Native Botanic Gardens at Otari-Wilton's Bush. Meet at the Information Centre. <i>Leader: Finn Michalak</i></p>

Chairman's Message

I am looking forward to spring and a great Open Day and plant sale at Otari-Wilton's Bush.

It has been busy over winter with a Matariki weaving event, new rock walls and gardens being built and a number of new projects in the pipeline too.

The Leonard Cockayne Centre continues to be busy and two successful workshop style events have been held with more to come. It is also been well booked by external parties as an outdoor environmental facility close to the city.

It will play a key role in the exciting lighting event being held during next years arts festival.

The Trust has recently assisted the New Zealand Plant Conservation Network, an organisation with similar objectives, with its upcoming conference and an endowment fund focused on Native Plant Conservation. Otari staff will be attending their biennial conference in Dunedin later this year.

We are making progress on a project to assist in protecting the 800 year old rimu which is one of the oldest trees in the Wellington City area. The engineer's report and landscape architect's plans are being prepared and the Trust is assisting with funding.

The revegetation team has been busy down the end of the main stream path weed-busting over winter and, more recently, planting a range of trees and shrubs provided by the Otari nursery. I might also mention that we have two volunteers who help in the nursery on a regular basis.

The guiding team are preparing for a busy schedule of visits over the next few months as visitor numbers will be increasing accordingly. Our hosts continue to provide a welcome service for visitors at weekends throughout the year with recent favourable comments on social media of their efforts.

My thanks to Rewi and his team who have kept up a consistent work effort while an internal restructure has been carried out, (which the Board had some input into recently).

We are looking for help for the plant sale in particular, advising the public and assembling plants for purchase. Contact Margaret Crimp or Jocelyn Hoskin if you can help.

I look forward to seeing you on the day. There are some great talks and walks so don't miss out.

Kind regards

Phil Parnell

Chair



Wellington Heritage Promotion Council

Otari Trust are members of this organisation. Phil Parnell is currently the Chairman.

September is the Heritage month for Wellington Region. For their latest newsletter and all Heritage events on in September, which include Otari-Wilton's Bush, follow this link.

http://www.wrhpc.org.nz/library/201509-10_heritage_today.pdf

Otari Report



Kia ora,

We are looking forward to open day at the end of the month on Saturday 26th September. The annual plant sale will commence at 10 am followed by the usual treats of talks and walks. Nga Manu will be joining us this year also offering a close up glimpse of tuatara. Our new gardens below the Cockayne lookout will be planted by open day and we will keep adding to the garden over the coming year as plants become available.

We have recently been under close scrutiny by organisers of the New Zealand Festival and the artists who ran the Powerplant exhibition at the Wellington Botanic Gardens last year. We hope to run a similar event here at Otari in March 2016 as part of the Festival. The exhibition is titled 'One for the Bird' and will be a spectacular lighting show centred on bird installations around the Circular Walk. Promises to be a really exciting event that all the staff here are looking forward to being involved in.

You may have seen some of our conservation efforts in the paper recently when we helped return some regionally rare *Melicytus* aff. *obovatus* plants back to Titahi bay. The plants were grown from material collected as we collected seeds from the few original plants remaining here in early 2014 for the New Zealand Indigenous Flora Seed Bank. As part of the permission associated with the original collecting we offered to grow on over sixty further *Melicytus* aff. *obovatus* here at Otari that were planted out last month with help from Porirua City Council and Greater Wellington Regional Council.

We have recently been part of a wider staff structure review as part of the cluster of the Botanic Gardens of Wellington, you can read more about the review in this newsletter. Two new initiatives are the appointment of an environmental education officer and a conservation and science advisor. I'm looking forward to seeing these roles further our management plan goals and help continue to develop us as leaders in the botanic garden field.

Kind regards
Rewi Elliot
Manager, Otari-Wilton's Bush
rewi.elliott@wcc.govt.nz

Otari Calendar 2016

Calling all Trust members who have photo images of Otari, the plants of Otari and people enjoying Otari. We are putting together another calendar in landscape format although two portrait photos could be put together. You will need to be able to deliver a high resolution image but please send in any version you have for a panel to choose from.

We will need these by September 20th send to m.crimp@xtra.co.nz in the first instance with contact details.

Open Day: Saturday 26 September



HELP!

Otari-Wilton's Bush Open Day, Saturday 26 September

We need your help in different ways:

- **We need help to man the refreshment table and the barbecue.**
- **We also ask you to help by providing cakes, muffins, loaves, biscuits etc to sell**

The Cake stall/ refreshment stand and barbecue are our great fundraisers but they can only be successful with your help.

Contributions can be left in the meeting room of the Information Centre on Friday afternoon, 25 September, or delivered to the cake stall on Saturday morning.

For any questions or to volunteer please contact:

Jocelyn Hoskin, 475 8696, jocelynhoskin@clear.net.nz

or Margaret Crimp 475 3263 m.crimp@xtra.co.nz

Open Day Programme

10am Native plants for sale on the Cockayne Lawn

11am Free guided walk through Otari-Wilton's Bush Join our Otari guides to hear stories about New Zealand native plants. Meet at the Information Centre. **1 hour**

12pm Lecture: Understanding and valuing our plants Guest Speaker Dr. Leon Perrie, Museum of New Zealand Te Papa Tongarewa. Location: Leonard Cockayne Centre

1pm Gecko and Tuatara Get a closer look at these fascinating reptiles. Location: Leonard Cockayne Centre

1.30pm Lecture: Hidden Lives of Native Bees Guest Speaker Dr. Phil Lester, Victoria University of Wellington. Location: Information Centre

2pm Free guided walk through Otari-Wilton's Bush Join our Otari guides to hear stories about New Zealand native plants. Some steps, steep in places. Wear good footwear. Meet at the Information Centre. **1 hour**

All guided walks start at the Information Centre

There will be stalls and displays from community groups.

Refreshments available all day.

Trust Board 2015 - 2016



The Board of Trustees for the current year is:

Chairman Phil Parnell	93 Amritsar St, Khandallah. Phone: 479 2239	landy@xtra.co.nz	
Secretary: Margaret Crimp:	167 Wilton Rd., Wilton. Phone: 475 3263	m.crimp@xtra.co.nz	
Treasurer. Jocelyn Hoskin	14 Warwick St, Wilton. Phone: 475 8696	jocelynhoskin@clear.net.nz	
Bev Abbott	40 Pembroke Road, Northland	bevabbott@xtra.co.nz	Phone: 475 6468
Peter Buxton	106 Weld St, Wadestown.	pebuxton@xtra.co.nz	Phone: 472 3456
Wilbur Dovey	40 Warwick St., Wilton.	cweag.dovey@xtra.co.nz	Phone: 499 1044
Ian Stockwell	2 Paisley Terrace, Karori .	stockwellian@hotmail.com	Phone: 476 3630
Cathy Wylie	43 Huntleigh Park Way, Ngaio.	Cathy.wylie@nzcer.org.nz	Phone: 938 6498

The trustees welcome individual communications from members on any matters relating to Otari-Wilton's Bush Reserve or the Trust, particularly from those who would like to assist and participate in our activities.

Newsletter: Vera Burton. Phone 938 8207. davee@paradise.net.nz

New Zealand Festival 2016

Otari-Wilton's Bush will be the site of a big festival attraction next year. Some of the lead artists behind the successful *Power Plant* light show in the Botanic Garden last year are bringing a new show inspired by the bird world, *One For the Birds*. Sponsored by Wellington International Airport it will feature NZ bird song, and more than 1500 points of light. I'm looking forward to it already!



Projects at Otari-Wilton's Bush

It was suggested that it might be interesting to have a paragraph about projects at Otari. It was a much bigger 'paragraph' than I had expected. Here are the articles I received. My thanks to all who have contributed to this interesting exercise

.

Te Papa botanical research at Otari-Wilton's Bush

Otari-Wilton's Bush is an extremely valuable research and educational resource. At Otari, researchers are able to easily access fresh material of plants which may only be found in inaccessible or distant places.

Te Papa botanists have been using the native plant collections at Otari in their taxonomic research ever since the gardens were first developed. They also give talks, put on workshops and lead walks at the garden in which the public can find out the latest about their research on New Zealand native plants.

In March 2015, two Te Papa botanists, Phil Garnock-Jones and Heidi Meudt, visited Otari to make collections for their research on *Veronica* (speedwells and hebes). Over two days, they worked together to sample 61 different *Veronica* individuals from the gardens, with assistance from Rewi and Finn to locate the plants. Phil took photos of each of the plants, while Heidi snipped off a short branch with flowers or fruits and placed it in the plant press to make a voucher specimen. A few leaves from each individual were also placed in bags with silica gel to quickly dry the material for future DNA analyses.

Photo: This tiny native plant, Veronica lilliputiana, is found on the shores of lakes, ponds, and lagoons in the east of the South Island, as well as at Otari! The scale bar is 1 mm long. Photo by Phil Garnock-Jones.



Back at the Te Papa herbarium, the *Veronica* specimens were dried and databased. Otari's Eleanor Burton retrieved the original provenance and collection information (where known) from Otari's database, which was then added, together with Phil's photos, to the Te Papa collection records. The dried collections were then mounted with a label to make herbarium voucher specimens that are now part of the collections at Te Papa. Voucher specimens are a permanent record of the plant that was sampled, protecting our work against future name changes and occasional misidentifications.

These *Veronica* records and photos can be seen on Te Papa's Collections Online:
<http://collections.tepapa.govt.nz/search?searchTerm=Veronica+Otari+Mar+2015&scope=all>

The *Veronica* specimens will be used in a study of the evolutionary history of the genus. Some of Phil's photos will also be included in a new eFlora treatment of New Zealand *Veronica* (Garnock-Jones, in prep.)

(Check out this webpage to find out more about the New Zealand eFlora and see pdfs of recent eFlora treatments: <http://www.nzflora.info/publications.html>).

Te Papa currently holds over 700 herbarium specimens that have been collected at Otari. Interested to find out just what these collections are? Want to know more about what other Te Papa research projects have involved Otari plants? Check out this recent blog post:
<http://blog.tepapa.govt.nz/2015/06/10/te-papa-botanical-research-at-otari-wiltons-bush/>



Many thanks to Otari staff, especially Rewi, Finn and Eleanor, for their ongoing and enthusiastic support of our research!

Heidi Meudt & Phil Garnock-Jones
Research Scientists, Botany
Museum of New Zealand Te Papa Tongarewa
heidim@tepapa.govt.nz
phil.garnock-jones@tepapa.govt.nz

.

Amanda Taylor, Victoria University, Wellington

Forest canopies are regarded as one of the final frontiers of ecological exploration. Situated high up in the trees are diverse communities of plants, insects and vertebrates, some of which never persist on the forest floor. My research interests lie in the field of community ecology, and during the course of my PhD at Victoria University I have studied the community dynamics of forest canopy plants – epiphytes. Epiphytes form an integral component of both tropical and south-temperate forests, and can account for an impressive 35% and even 50% of all vascular flora. Without a reliable water supply, epiphytes are entirely dependent on atmospheric moisture to meet their water requirements (which is why we have plenty in the Wellington region!!). I have collected data for two of my PhD chapters in OWB, one that follows epiphyte community development throughout tree ontogeny, and another that addresses plant functional responses to epiphyte succession. OWB is a great place to do epiphyte research because it is close to the university and the canopy walkway gives an unimpeded view into some of the tree tops. For more information or questions about my research/epiphytes feel free to contact me on amanda.taylor@vuw.ac.nz.

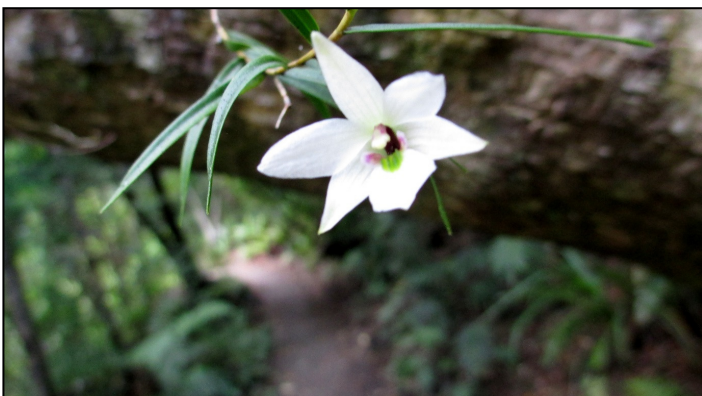


Photo: Dendrobium cunninghamii or pekapeka. Usually flowers around Christmas time

.

Biodiversity Research - An International Collaboration Involving Otari Native Botanic Garden

Tanja M. Schuster, PhD

I am a botanist from the Royal Botanic Gardens Melbourne (RBGM) and The University of Melbourne and study a group of plants in the buckwheat family Polygonaceae called pohuehue and tororaro. Their scientific name is *Muehlenbeckia*, and I am interested in studying these plants, because of their disjunct distribution pattern as they occur in New Zealand, Melanesia, Australia, and the Andes of South America. Some are ecologically valuable as dune stabilisers and habitat for native animals (e.g., the common copper butterfly), and there are conservation concerns for others. Some species of *Muehlenbeckia*, such as *M. astonii* or the wiggy-wig bush are becoming rare in the wild, and we need to understand their evolutionary history better to ensure conservation of threatened species. The distribution pattern of *Muehlenbeckia* enables us to study the biogeographic history of continents and connections between Australasia and South America by making age estimates of plant groups endemic to these areas using fossil data and genetic work.

In order to do the genetic work, it is necessary to collect fresh leaf material of multiple samples per species of *Muehlenbeckia* in the wild. Sometimes however, it is difficult to source these plants for various reasons (rarity, cost of field work across multiple continents, occurrence of species in politically unstable areas, access to private land, etc.). This is when living collections such as the one held at Otari Native Botanic Garden become critical for the advancement of research, because they give access to plants and provenance information essential for the completeness of a study. For example, it would have been difficult for me to collect one subspecies of *Muehlenbeckia complexa* from The Three Kings Islands, but it was available at Otari, due to a collaboration with Collections Curator Finn Michalak and his excellent care of the plants. Both Manager Rewi Elliot and Finn Michalak spent a substantial amount of time walking the grounds with me to locate the numerous species of *Muehlenbeckia* grown in the native plant collection, sharing information about these species, and facilitating collection of material after permission had been granted by iwi. It was exciting to see some species “in the flesh” for the first time, to be able to take pictures for presentations, observe their morphology and insects interacting with the plants. This visit has sparked an ongoing collaboration and resulted in a trip to RBGM by Finn Michalak to consult with staff, who take care of the New Zealand collection of plants at Melbourne. Finally, I look forward to sharing the results of my research on the systematics, evolutionary and biogeographic history of *Muehlenbeckia* as they become available.

.

Ongoing Research with Victoria University of Wellington

Wellington City Council and Victoria University of Wellington have recently signed an agreement over use of the new Leonard Cockayne Centre at Otari-Wilton’s Bush. Under this agreement Otari-Wilton’s Bush and Victoria University will collaborate to allow students and staff of the University to use the Leonard Cockayne Centre to carry out research and education. Already in August the Centre has been used for three days as a learning base by the University while dozens of students have learnt about New Zealand plants in the native botanic garden and surrounding forest. New signage planned in front of the Centre will highlight the working partnership between the parties and describe the University’s desire to help implement Leonard Cockayne’s vision for Otari - to be a working laboratory of scientific research on New Zealand flora.

.



Dr J. Birch, Post Doctoral Fellow, Royal Botanic Gardens, Victoria

Over the last 10 years, Otari-Wilton's Bush has provided support for research projects focused on important, species-rich New Zealand plant lineages, including studies of *Astelia* (Asteliaceae) and *Poa* tussock-grasses (Poaceae). These genera include species that are vegetation dominants and therefore provide habitat and ecosystem services across multiple vegetation types. During this research the morphological and genetic diversity within these genera was quantified to enable accurate identification of species and the relationships of New Zealand species to those found in other parts of the world were established.

Otari-Wilton's Bush has in cultivation *Astelia* plants representing morphological and regional morphotypes (e.g. *Astelia* sp "Serpentine") that are morphologically distinct from recognized species. These morphotypes have been proposed as representing distinct taxa, but their status had not been fully assessed. It was possible to observe the morphological features of these plants during a recent visit to Otari-Wilton's Bush. Observation of these plants during fieldwork, which had previously not possible due to the remote locations in which these plants grow. As a result of this study *Astelia* taxonomy was revised, relationships among New Zealand, Australian and the Pacific island species were identified, and it was determined that *Astelia* has been present in New Zealand from approximately 24 million years ago.

During systematic research for *Poa* tussock-grasses, targeted fieldwork was conducted throughout New Zealand to collect leaf samples for extraction of DNA to study the genetic diversity of these species. Otari-Wilton's Bush staff kindly provided permission for collection of small leaf samples from plants in cultivation to supplement material collected during fieldwork, increasing the opportunity to achieve comprehensive sampling of native species in this study. This ongoing study of *Poa* will allow us to determine the relationships among New Zealand and Australian species based on genetic data for the first time.



• • • • •

Nesting Tui and Fantail: How Do They Respond to Pest-Mammal Control?

Introduction

Native Birds and Pest-Mammals in NZ

- The main pest-mammal predators of native birds in New Zealand native forests are rats, stoats, possums and cats
- Control of pest-mammals is done in different ways:
 - Ongoing ground control (e.g. Wellington City using bait stations + kill-traps) to continuously suppress rats, stoats, possums and cats
 - Pulsed aerial control using mammalian toxins (e.g. 1080 in remote forests) to reduce rat, stoat and possum populations and protect breeding birds + other native wildlife

Nesting Success

- Nesting success is a measure of the proportion of nests that successfully fledge 1+ chick
- Some nesting bird species are more vulnerable to pest-mammal predation than others (i.e. the nests are placed in vulnerable positions, or the nesting adult is also taken by predators)
- Predation by pest-mammals is an important limiting factor for nesting native birds but other factors like: weather, food availability, natural predators and, of course, human disturbance + management are involved (see diagram at right)



Photos by Sid Mosdell and courtesy of Nga Manu Reserve



My Wellington Nesting Study

Tui and Fantail Nest Success

- Monitoring nests of tui and fantails in Wellington City reserves; August to March each year until 2017 for predation by rats, stoats, possums and cats
- Assessing the specific vulnerabilities of these two different sized bird species across reserves with various levels of pest-mammals
- Mathematical modelling of nest success with bird species, nest placement, climate and pest-mammal abundance



Factors that Affect Nesting Birds

How can you help?

- Please contact me if you find an active tui or fantail nest in Wgtn:
 - Watch a bird with nesting material fly to it's nest (plse keep 2+ meters away)
 - Nesting birds can become agitated when people approach. A noisy bird may mean you are already near a nest!
- Please contact me if you see a leg-banded tui or fantail (I am also studying juvenile dispersal)



This PhD was funded by a scholarship from the Holdsworth Trust

Contact Information: Nyree Fea – Mobile Phone: 022 120 7237

Supervisor Dr. Stephen Hartley, School of Biology

Email: Nyree.Fea@vuw.ac.nz

Thank-you!





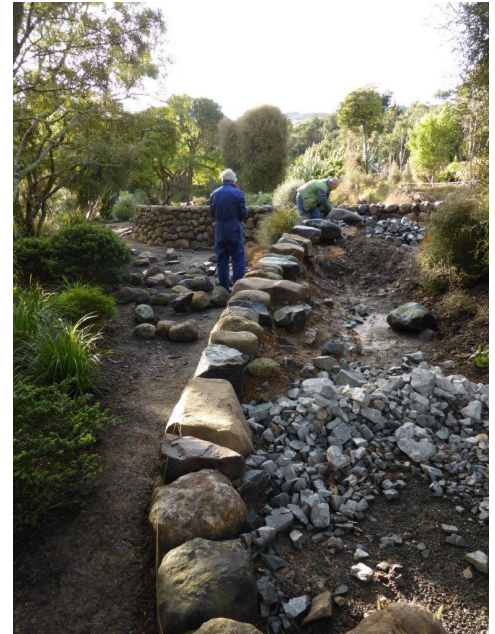
Building a Stone Wall

Photos: Eleanor Burton



The 30 metre dry stone wall being built by Gavin Dench and Simon Fern retains over 60 tonnes of added topsoil to create an interesting new garden area. The theme for the garden is plant adaptations. So expect small leaved, wiry plants. Silver hairy foliage. Succulent leaves. Climbers, creepers, ferns and fiercely armoured flora. We will begin the planting imminently, and the lower collections will become a fine place to sit or peruse and enjoy a diverse range of plants. We are very happy with the progress so far, and hope visitors will enjoy watching the new landscape unfold.

Finn Michalak



Wanted

For the past two years, I've been working on a small book of poems, comments and images as a fundraiser for Otari Trust. The book is titled *Otari Pathways —Nga Ara o Otari* and is about the walks in Otari-Wilton's Bush. The idea is for tourists and visitors to buy this book and have it in their possession as they walk Otari's pathways.

The illustrations are photographs taken over the past two years or so. They've all been altered to look more like paintings.

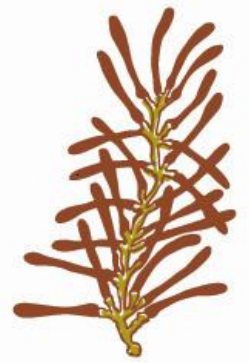
The style of the book is: (a) All images are on the odd pages and are sized to the Golden Ratio; (b) On the even pages, complementary to and inspired by the image opposite, there's text, mainly poems of traditional rhyming style or modern non-rhyming style. And some surprises!

I have still to arrange for my presence at an Otari Trust Board meeting, in the hope they will agree to fund the printing of *Otari Pathways —Nga Ara o Otari*.

If anyone reading this is interested to write poems or comments for my book, please get in touch with me urgently by email: <colin.ngaire@clear.net.nz>. I then email two images to the poet, who will write poems or comments to suit each image.

This project is starting to become urgent because of the need to have *Otari Pathways —Nga Ara o Otari* ready for sale by the time cruise ships start arriving later this year.

Colin Smith



OTARI
WILTON'S BUSH TRUST

*From the
Wellingtonian.
August 13
2015.*



Roger Crimp and Ros Batcheler, two of the 2015 Otari Award winners recognised for their volunteering work at Otari-Wilton's Bush.

PHOTO: ESTHER ZWEIFEL

Wellingtonian August 13 2015.

Rambo team eradicates pests

ESTHER ZWEIFEL

The name Rambo doesn't usually conjure up images of retirees trapping rats in the bush, but in Otari it does.

Rat and Mustelid Blitzing at Otari (Rambo) is the unlikely name of volunteers combating pests at Otari-Wilton's Bush.

Laying traps for rats, mustelids (ferrets, weasels and stoats), feral cats and hedgehogs on the steep slopes of the reserve, they are helping protect the native bird life.

The Rambo team is just one of the volunteer groups supporting the Otari-Wilton's Bush Trust.

Trust chairman Phil Parnell said it had almost 100 volunteers.

"They are absolutely key. We couldn't possibly do it without our volunteers," he said.

The trust's volunteers give their time in a variety of roles – as hosts, tour guides and in the native plant nursery.

Others work to revegetate areas marked by Wellington Regional Council as key native ecosystems, such as the Kaiwharawhara Valley.

Though the council takes responsibility for trapping possums, the Rambo group ensures the 55 rat and mustelid traps are emptied and re-baited.

Parnell said this combined work was having positive results.

"The bird life in here is fantastic."

In recognition of the role of the volunteers, the trust recently held the 2015 Otari awards.

Roger Crimp of Wilton, Ros Batcheler of Khandallah, and Lynsie Kerr of Lower Hutt received awards for their work over 15 years.

Crimp, a volunteer since 2000, was a Rambo member for eight years until an injury forced him to stop.

He now helps to organise the scientific education seminars at the gardens in conjunction with Te Papa, Victoria University and Wellington City Council.

Batcheler has volunteered since 2003 and also spent a few months with the Rambo team, but is now largely involved in the nursery and revegetation programmes.

The volunteer group was acknowledged this year when the trust won a Green Flag award for being leaders in managing parks and open spaces.

Otari-Wilton's Bush manager Rewi Elliot said the volunteer programme was instrumental in securing the award.

Otari-Wilton's Bush is the only botanic garden in New Zealand dedicated exclusively to native plants.

New Zealand has about 2500 native plant species, 1200 of which are at Otari-Wilton's Bush, the biggest collection in New Zealand.

Matariki Flax Weaving weekend



Phil Parnell took these photos at the weaving weekend held at Otari as part of the Matariki programme. He also did some research from old newsletters and found this reference to Harakeke plantings.

Six selected cultivars from the Rene Orchiston flax collection have been planted at the Churchill Drive entrance, the northern picnic area and beside the Kaiwharawhara Stream along Wilton Bush Road. These have been specially selected by Saani Scott, a weaving tutor at Te Wananga O Aotearoa, and will be available

for harvesting, by permit, for local weavers. Rene Orchiston travelled the country for 30 years selecting the best flax cultivars to preserve them at a time when interest in weaving was at a low ebb and the art was dying out. Now with the huge resurgence in interest, these plants are proving to be a wonderful resource.

Saani also returned in 2009 to demonstrate flax weaving.

BOTANIC GARDENS OF WELLINGTON STAFF STRUCTURE REVIEW

In late July a decision document detailing the final outcome of a review of staff structure across the Botanic Gardens of Wellington was released.

The Botanic Gardens of Wellington comprises a cluster of four gardens; the Wellington Botanic Garden, Otari-Wilton's Bush, Bolton Street Cemetery and Truby King Park.

In an earlier consultation document, David Sole, Botanic Gardens Manager, and Amber Bill, Open Space and Specialist Parks Manager, outlined a proposed new structure for the Botanic Gardens Team. The Otari Trust Board received the consultation document in June and submitted a significant submission on its content. The final decision document has resulted in new positions being established and some changes to the existing staff roles.

I wish to thank the Trust board for their participation in the consultation phase. The feedback that has been received has been carefully considered in drafting the final decision document. The Trust had a number of concerns about volunteer management which were noted. The proposed role with volunteers was in an administrative capacity only and as being a contact point for individual volunteers. The way that we work with volunteers on the ground was and remains as at present.

RATIONALE FOR CHANGE

Towards the end of 2013, the Parks, Sport and Recreation Business Unit within Wellington City Council confirmed a new organisational structure that delivers a new business model. This new model had a change in focus, from increasing utilisation through our assets, to increasing utilisation through engagement with customers and designing customer solutions. Other key benefits of the new business model include:

- Improved customer service and clarity for customers and staff;
- Focus on community partnerships and programme development;
-
- Consolidating like functions and work synergistically particularly around improved integration of asset management, project management and business support functions;
- Being agile and fit for purpose with the ability to respond to changing needs and also to be scaled up to a regional level.



The new PSR structure established the Open Space and Parks team. At the Botanic Gardens, the key change was the realignment of the Botanic Gardens Manager and Team Manager roles to the new business model and a change of reporting so that the Botanic Gardens Manager reports directly to the Open Space and Parks Manager. The changes are now fully embedded.

In 2014 the Botanic Gardens of Wellington Management Plan was reviewed and released with a revised vision, guiding principles and policies.

To realise the Botanic Gardens Management Plan guiding principles and policies, the Botanic Gardens team needs to be focussed on and able to deliver plant collections and garden experiences which:

- inspire, engage and educate;
- enhance the garden environment and landscape;
- deliver conservation goals;
- are well managed and documented;
- are a resource for research and education

Over recent years the general role of botanic gardens has changed. Today, the Botanic Gardens of Wellington have a role to play in conservation, education and recreation as well as local, regional and international obligations, especially the Global Strategy for Plant Conservation.

NEW POSITIONS ESTABLISHED

The decision means that the following new positions have been created:

- Conservation and Science Advisor
- Botanic Gardens Educator
- Visitor Experience Team Manager

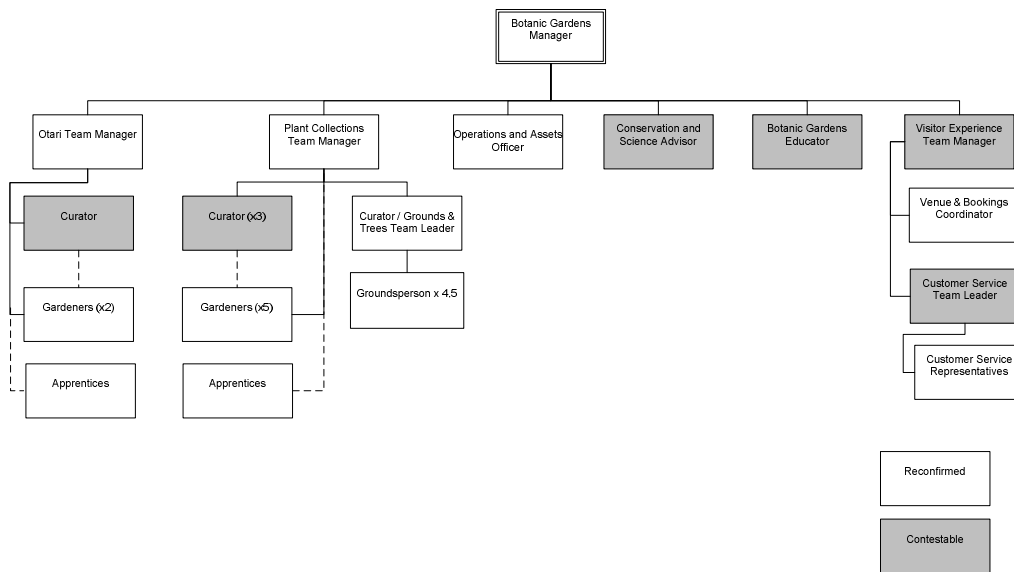
The three positions above will work across all four Botanic Gardens of Wellington, helping to deliver on the guiding principles and policies described in our Management Plan.

These changes are intended to deliver:

- Better planning and coordination of volunteers across Botanic Gardens and Otari.
- Dedicated resourcing around promotion activities, events and visitor experiences.
- Delivering a greater education focus across all activities.
- A comprehensive and scientific approach to collection review and management, including appropriate decision making around the future of development of collections.

STAFF STRUCTURE CHANGES AT OTARI-WILTON'S BUSH

Below is the confirmed new structure across all four Botanic Gardens of Wellington (with Otari-Wilton's Bush detailed on the left hand side of the diagram).



The decision means that there are changes to the former staff structure at Otari-Wilton's Bush, including:

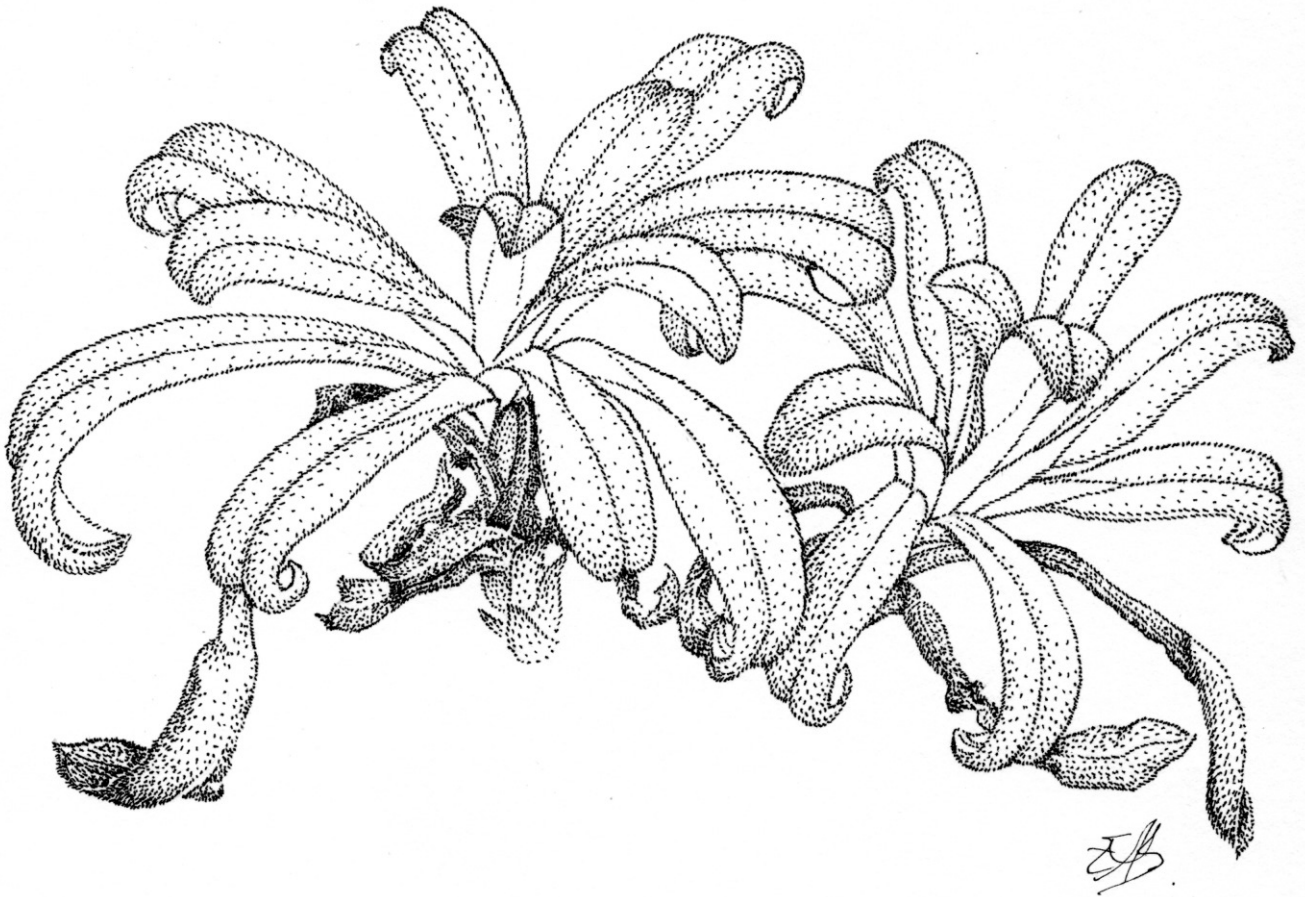
- A change from two Curator roles and one Gardener role; to one Curator role and two Gardener roles.
- A change in reporting line for the Assistant Gardener role to report to the Curator/Grounds and Trees Team Leader (the Assistant Gardener role will continue to be based primarily at Otari-Wilton's Bush).

These changes are intended to:

- Increase capability and technical skill across the wider team and provide greater development opportunities for staff.
- Lead to a multi-discipline workforce.
- Establish greater flexibility across the wider team to support future successional planning.
- Better utilisation of resources including the ability to deploy resources based on need and demand.
- Establish clear accountability and responsibilities for all roles.

Once again I wish to thank the Trust board for their participation in the consultation phase and look forward to working together in this new structure.

David Sole
Manager, Botanic Gardens of Wellington



Myosotis rakiura

This is a coastal plant from the East and South coasts of Southland, also found on Stewart Island and the Snares. It is found on rocks and cliff faces, and has thick almost velvety leaves. The flowers are white and densely packed on the flowerhead. In cultivation it prefers a partly shaded site with a moist but not boggy soil. It is easily propagated from seed

OTARI-WILTON'S BUSH TRUST

(Supporting Otari-Wilton's Bush Reserve)

Membership Application Form

We are delighted to welcome new members - whatever your interest in Otari-Wilton's Bush - from a desire to participate in active friendly volunteer support and educational activities, or just the satisfaction of being associated with this wonderful native plant reserve.

Our membership year is from 1 April to 31 March. New members joining after 1 January will have the membership accredited to the following year.

Yes, I would like to join the Trust.

Name (s) :

Postal Address :

.....

.....

Telephone contact number/s : ().....

E-mail address: < >

Billing Name and Address :.....

(if different from above)

Subscription	Corporate	\$30	\$
	Double/Family	\$15	\$
	Individual	\$10	\$
	Student/Unwaged	\$5	\$
Donation*			\$
Total payment	(please enclose cheque**)		\$

*The Trust is registered as a Charitable organisation and donations over \$5.00 qualify for a tax rebate to individual taxpayers. (annual limits apply) We will provide a donation receipt to support your tax rebate claim

**We regret we cannot process payments by Credit Card.

If you are interested in becoming a volunteer, please indicate the areas of interest to you from the following list:

- | | |
|--|--|
| <input type="checkbox"/> Work parties | <input type="checkbox"/> Hosting at the Information centre |
| <input type="checkbox"/> Administration | <input type="checkbox"/> Guiding |
| <input type="checkbox"/> Historical Research | |

Please send this completed form with your cheque to:

The Treasurer, Otari-Wilton's Bush Trust, 160 Wilton Road, Wilton, Wellington 6012

Or pay by internet banking: .

Westpac Bank 030518: 0205713:00 50. Otari-Wilton's Bush Trust. Please add your name for a reference.